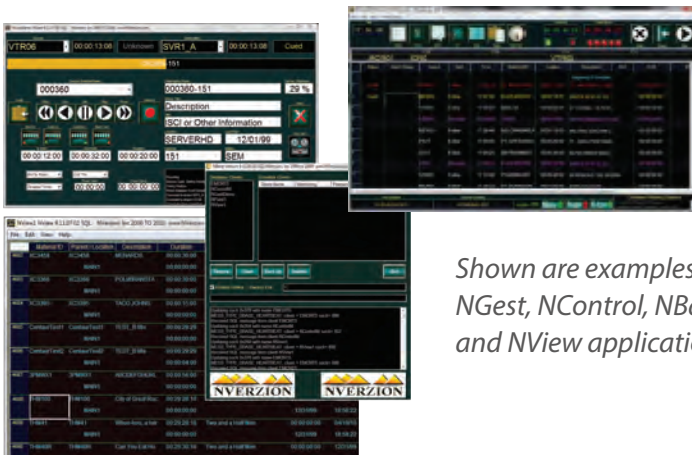


SOFTWARE AND HARDWARE PACKAGE

The NControl Lite Software & Hardware package provides you with all the necessary automation tools to get your channel to air. The package include one industrial rack mount PC with four serial connections to NVerzion's Ethernet Machine Control (EMC). These serial cables can be used to control up to four video related devices such as VTRs, video server ports and similar equipment.



Shown are examples of Ngest, NControl, NBase and NView applications

Package Includes

- Ngest - Dub-station software
 - Transfers frame-accurate content from one source to a record destination
 - Supports backup devices
- NPoint - Preparation
 - Provides reviewing, segmenting, and trimming
- NControl - Playlist
 - Event playlist for a single video server output
- NBase-SQL - Media Database Manager
 - Maintains local database of server clips and source tapes
 - Communicates changes between applications
- NView - Media Database Viewer
 - Operator can view, filter, sort, and edit database fields
- EMC - Ethernet Machine Control
 - Configurable control for up to 4 serial devices
- Computer System
 - 2RU rack mount chassis
 - Single Pentium processor, dual/mirrored drives
 - DVD/RW,
 - 4-port PCI 422 serial card
 - Note: Keyboard, monitor, mouse are not included

FAQs

- Can the system be tailored for a station's individual needs?
Yes. The software architecture is designed to accept specific customer modifications.
- What is the maximum number of devices a system can expand to? Is the physical location of devices important?
There is virtually no limitation on the number of devices OR on where they can be located.
- Is the system extensible?
Yes. The package can be expanded to any number of dubbing channels, playout channels, archives, etc. Additional capabilities can also easily be added, such as centralcasting, dish control, and asset management.
- What kind of devices can this package control?
The system uses VDCP to control video servers and is server agnostic. The system also supports a variety of tape machines. Optional controls can be added for more device control including routers and traffic interfaces.